

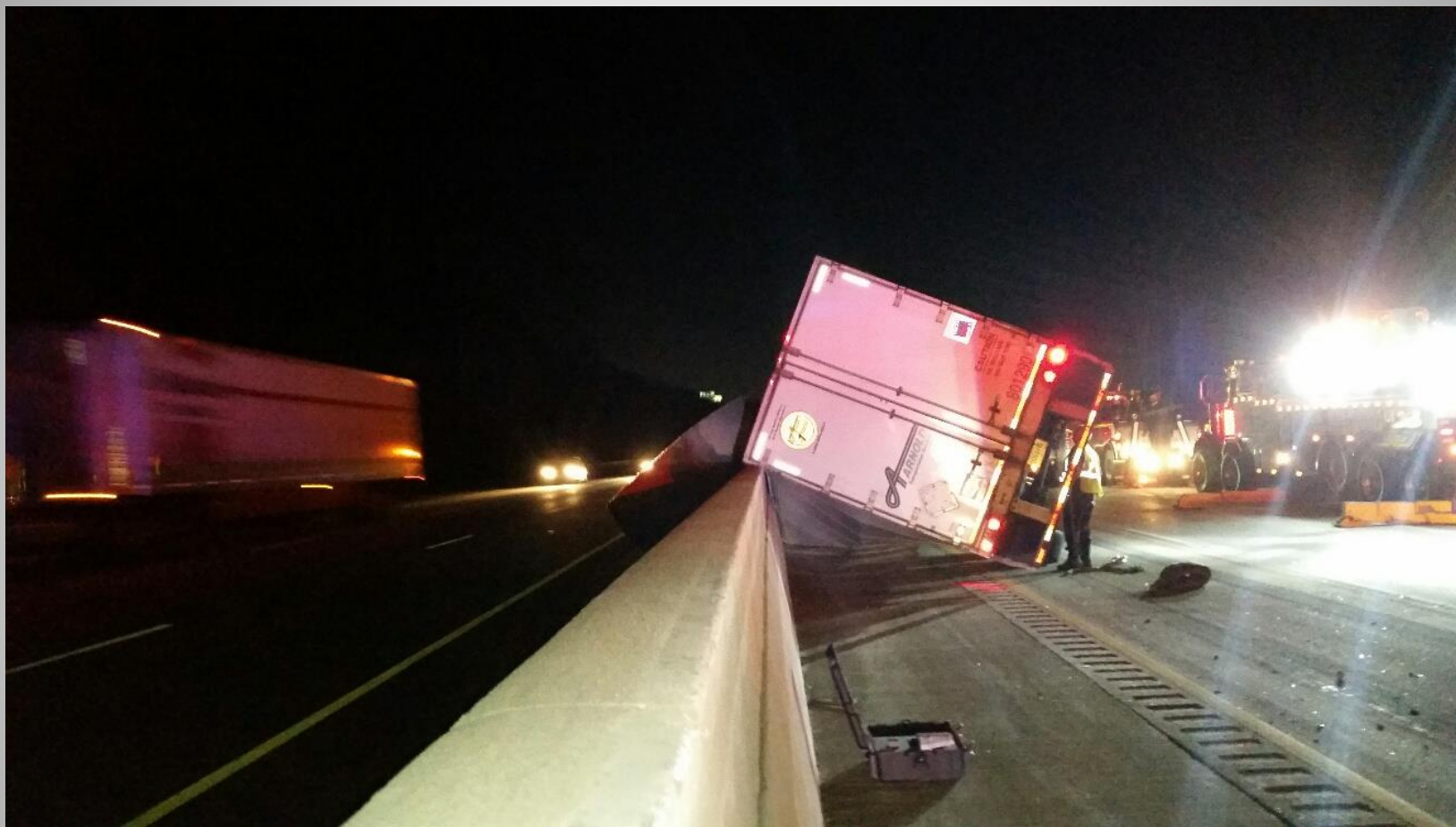


Electronic Stability Control (ESC)

For Large Commercial Vehicles



Major Commercial Crashes



Major Commercial Crashes



Major Commercial Crashes



Major Commercial Crashes



Major Commercial Crashes



Major Commercial Crashes

- The NHTSA has established a rule requiring electronic stability control (ESC) systems on trucks and some buses with a gross vehicle weight rating higher than 26,000 lbs.
- <http://www.nhtsa.gov/>



**National Highway Traffic Safety
Administration (NHTSA)**

- The installation of ESC systems will prevent approximately 2,329 rollover crashes each year.



Electronic Stability Control (ESC)

- The ESC rule means fewer incident responses for all responders!



Electronic Stability Control (ESC)



- ESC can eliminate 33% of fatal truck/bus crashes.
- ESC can reduce the total number of truck crashes by 70%.

Electronic Stability Control (ESC)

- There were 3309 fatal truck and bus crashes in 2014.
- According to the Insurance Institute for Highway Safety Insurance, injury Crashes cost \$195K
- Fatal crashes cost \$3.5 million.



Electronic Stability Control (ESC)



- 3.3% of rollover crashes account for more than 50% of driver and occupant fatalities overall.

Electronic Stability Control (ESC)

Electronic Stability Control
and Rollover Stability
Control will help save
lives!



PARSONS